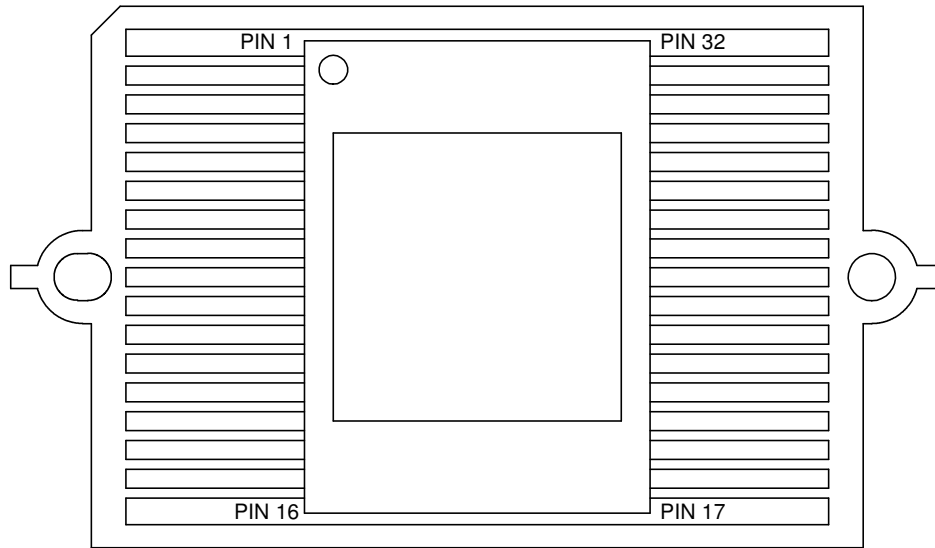


Notes: (Unless Otherwise Specified).

- 1) DIMENSIONS: INCH [mm].
- 2) FLAT LEADS ON TIE BAR ALLOY 42.
- 3) ALL EXPOSED METAL GOLD PLATED (Au).
- 4) PINS = 32, PITCH 0.050" [1.27mm].

TOLERANCE UNLESS NOTED		APPROVALS	DATE	<b>TopLine</b> <sup>®</sup>			
X.XX	+/- 0.01	DRAWN J. HINES	5/8/2011				
X.XXX	+/- 0.005						
X.XXXX	+/- 0.0025						
ANGLES +/- 0.5°		ENG		SCALE	SIZE	DRAWING NO.	REV
ALL DIMENSIONS IN		MFG		3.5:1	A	123268	A
<input checked="" type="checkbox"/> INCHES <input type="checkbox"/> MILLIMETERS		QA		DO NOT SCALE DRAWING			
THIRD ANGLE PROJECTION		CUST					
		REVISED		SHEET 1 OF 4			

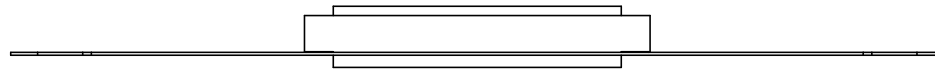
TOP



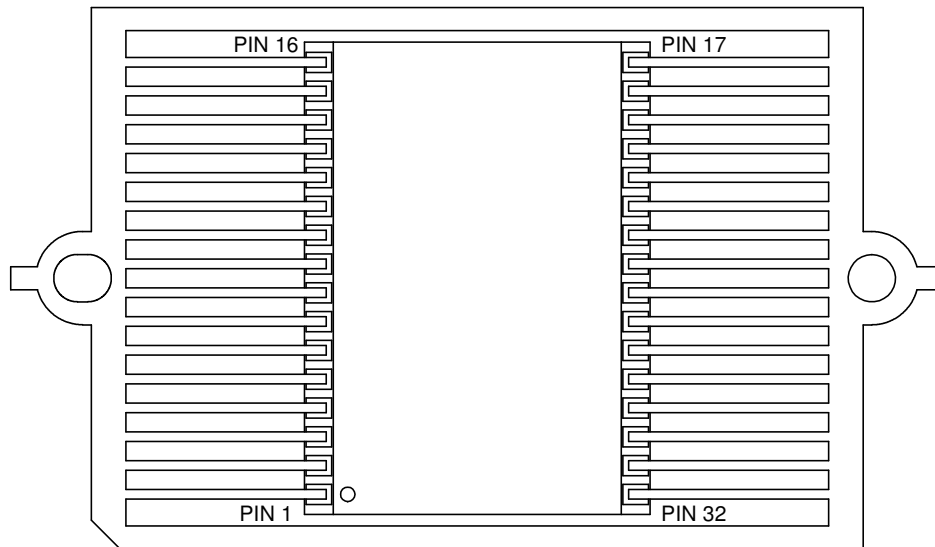
SIDE



SIDE



BOTTOM



**TopLine**®

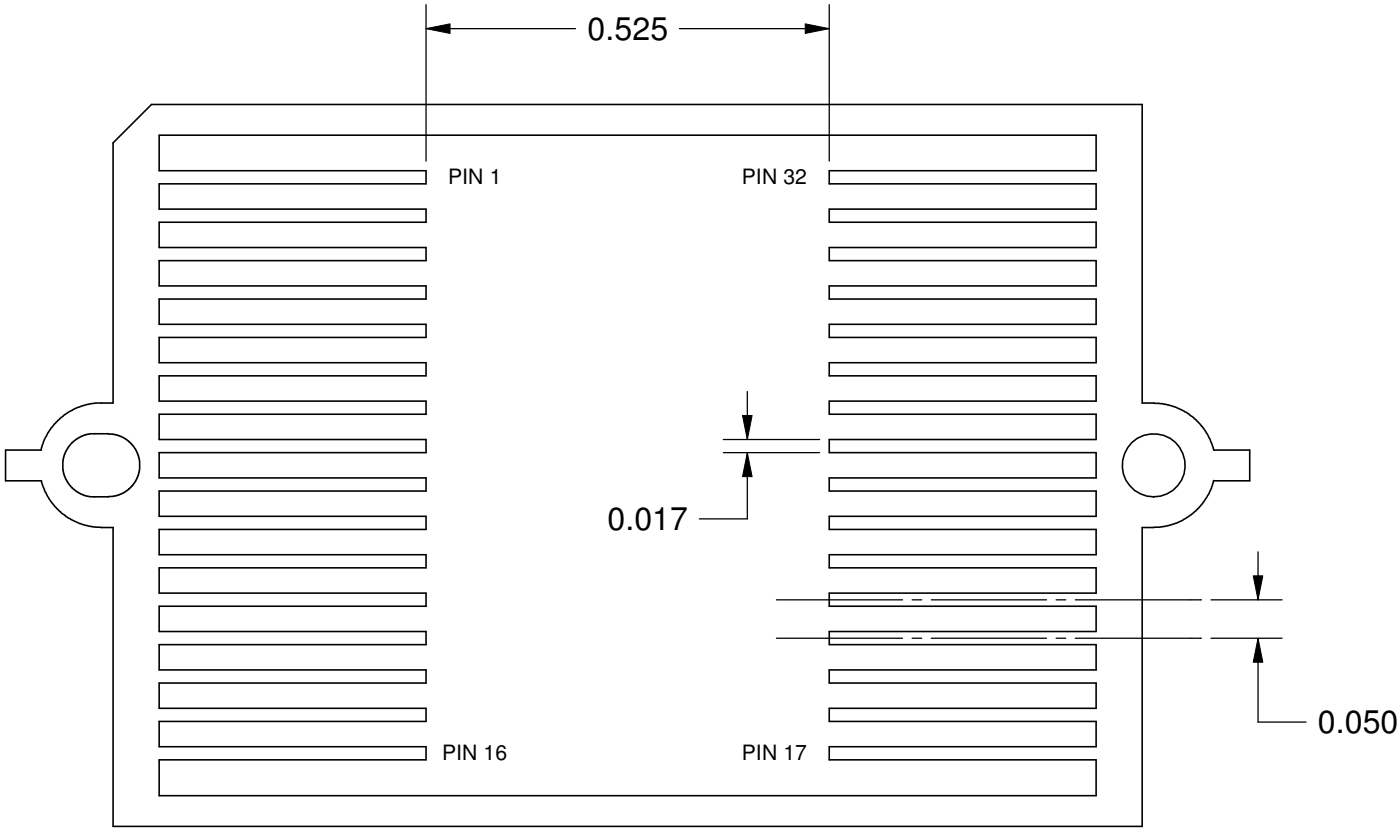
TITLE 32 PIN 0.050 INCH PITCH  
FP32F50R.60X.82B-A DUMMY

SCALE	SIZE	DRAWING NO.	REV
3:1	A	123268	A

DO NOT SCALE DRAWING

SHEET 2 OF 4

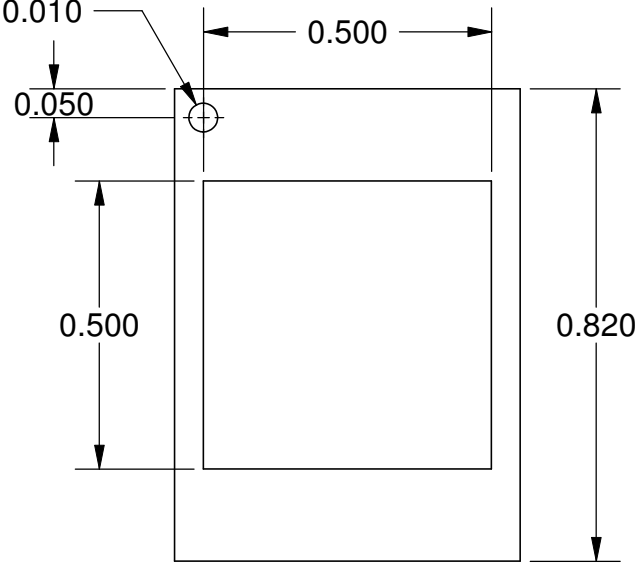
LEAD FRAME  
(SHOWN WITHOUT BODY)  
TOP VIEW



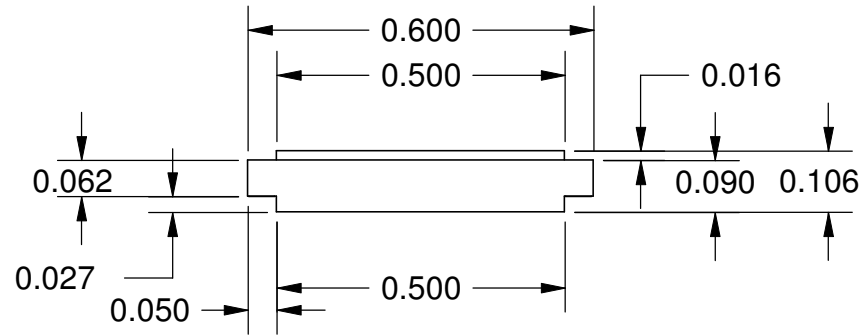
<b>TopLine</b> ®			
TITLE 32 PIN 0.050 INCH PITCH FP32F50R.60X.82B-A DUMMY			
SCALE 4:1	SIZE A	DRAWING NO. 123268	REV A
DO NOT SCALE DRAWING		SHEET 3 OF 4	

PIN 1 MARK  $\varnothing 0.050 \nabla 0.010$

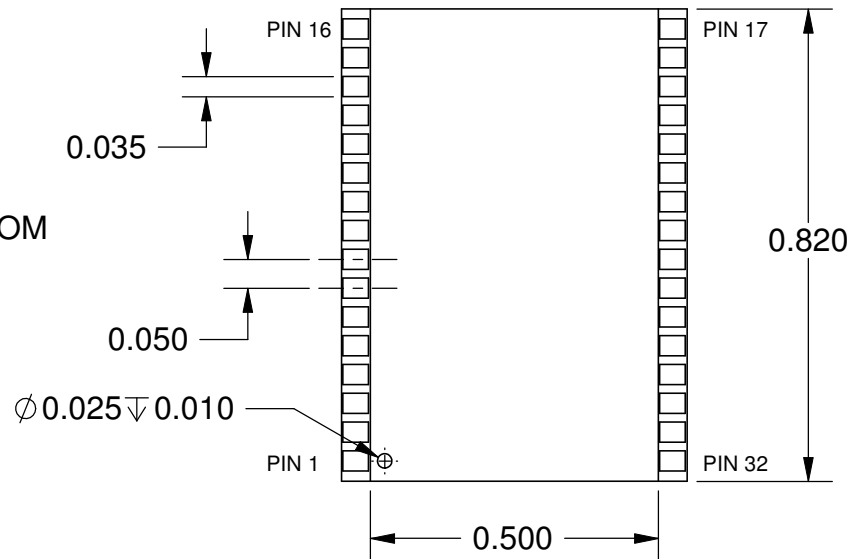
TOP



SIDE



BOTTOM



**TopLine**<sup>®</sup>

TITLE 32 PIN 0.050 INCH PITCH  
FP32F50R.60X.82B-A DUMMY

SCALE	SIZE	DRAWING NO.	REV
3:1	A	123268	A

DO NOT SCALE DRAWING

SHEET 4 OF 4